

SPOTTED GULLY OR SMOOTHHOUND?



Mustelus mustelus

Smoothhound; Houndshark; Hondhaai; Spierhaai



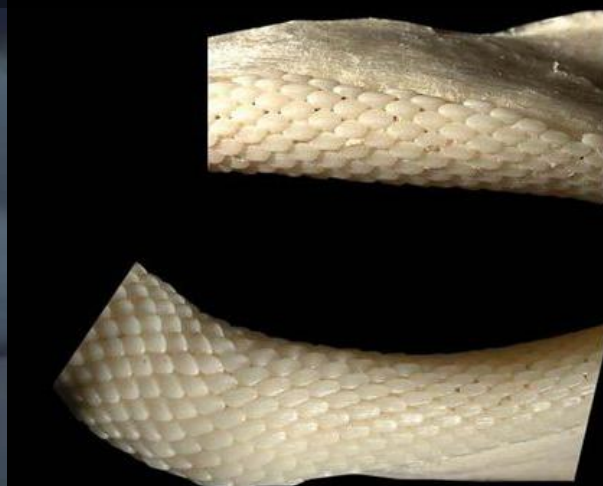
Short head & snout

Close set eyes; nostrils widely spaced;

Grey above, white below; sometimes scattered black spots

Longer **pectoral fins**.

“Smooth” teeth



Triakis megalopterus

Spotted gullyshark; Spotty; Giskekelde sloothaai



2nd dorsal fin almost as large as first

Usually many black spots but small juveniles and some adults with few/no spots

Small, pointed teeth

